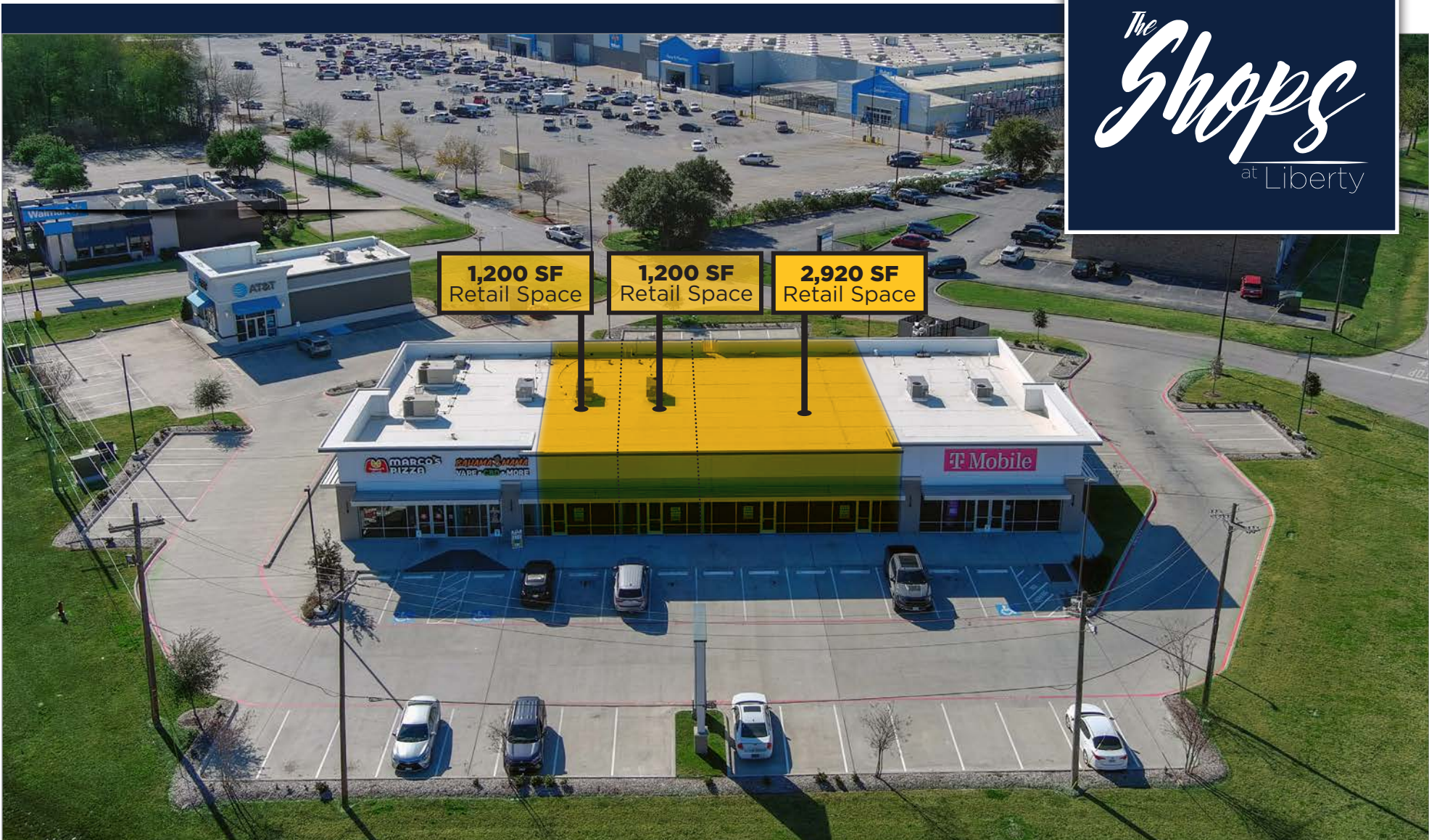


The  
*Shops*  
at Liberty

1,200 SF  
Retail Space

1,200 SF  
Retail Space

2,920 SF  
Retail Space



**WILLIAMSBURG**  
ENTERPRISES

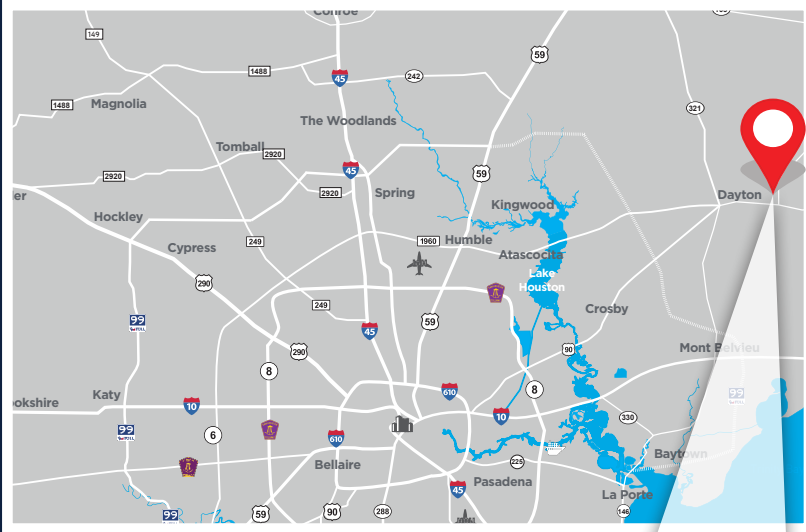
## SUPER WALMART ANCHORED SHOPPING CENTER

2139 N Hwy 146 Liberty, TX 77575

MARK LAPEYROUSE II | ml@williamsburgent.com | 713.804.1011

KHALED SALEM | ks@williamsburgent.com | 713.804.1020

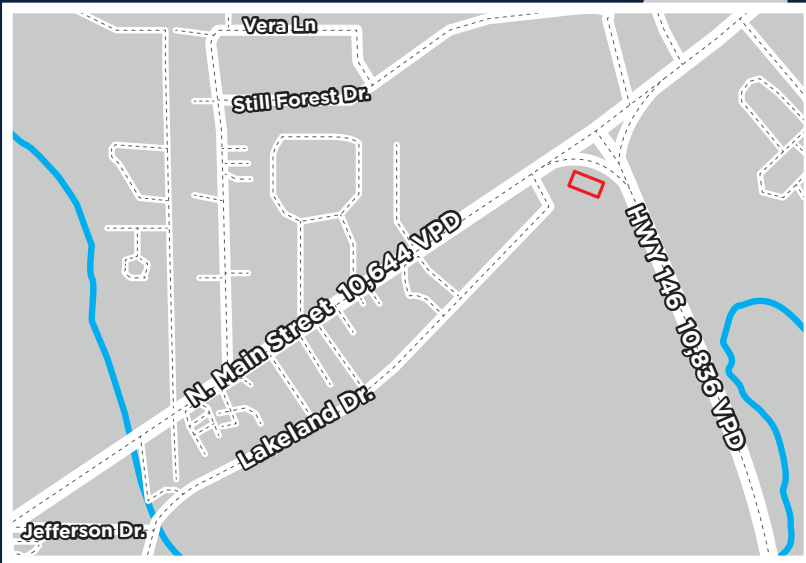




**67,415**  
RETAIL TRADE AREA



**37.1**  
MEDIAN AGE



**\$54,016**  
MEDIAN INCOME



**\$163K**  
MEDIAN HOME VALUE

*\* Data from Liberty County City-Data.com*

**MARK LAPEYROUSE II**  
713.804.1011  
ml@williamsburgent.com

**KHALED SALEM**  
713.804.1020  
ks@williamsburgent.com

# The Shops at Liberty



Hospitals or Medical Centers  
located within 5 miles



Schools  
located within 7 miles



Regional Airport  
located within 7 miles



Houses in  
Liberty



Liberty  
Population

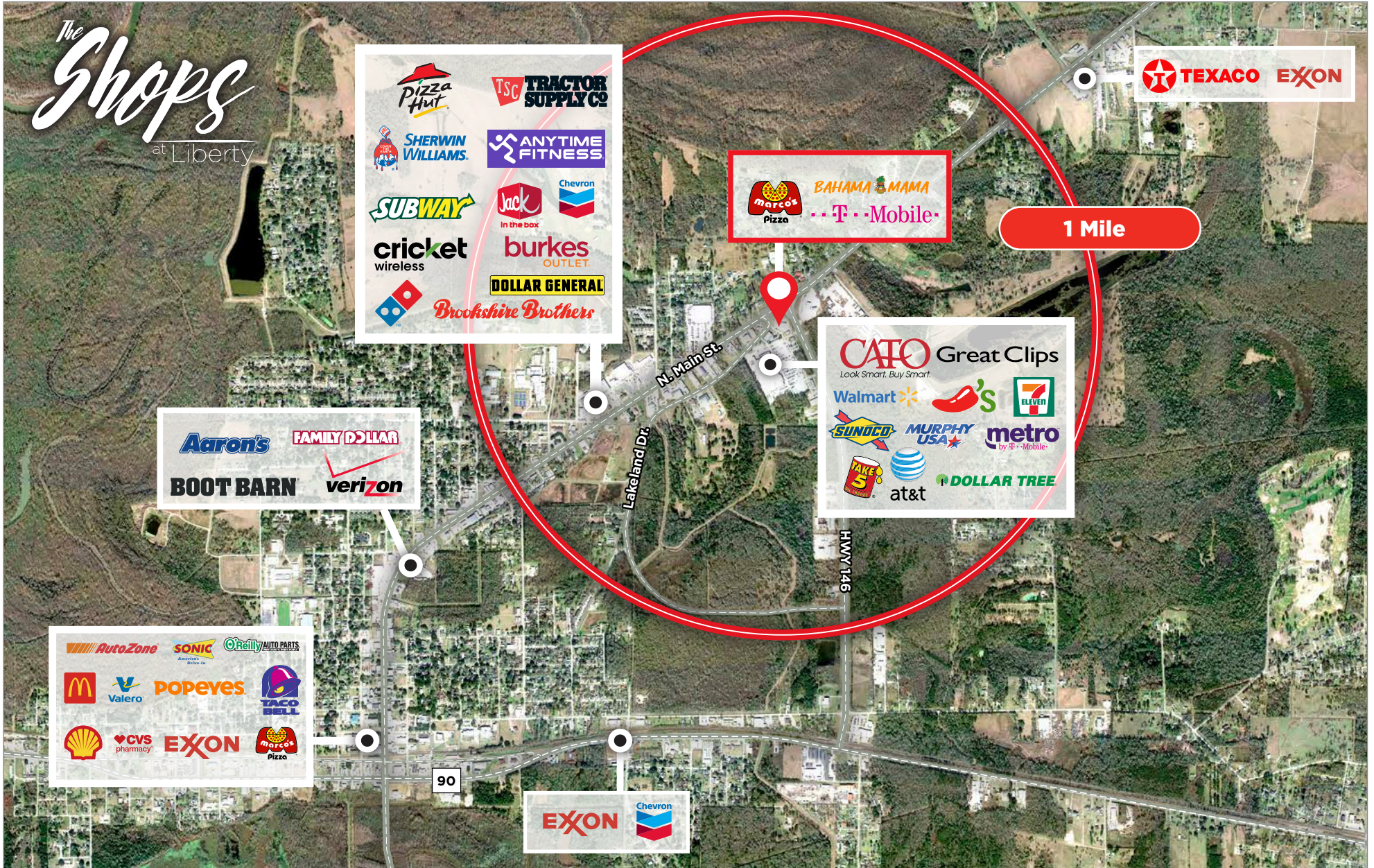
*\* Data from Liberty County City-Data.com*

**MARK LAPEYROUSE II**  
713.804.1011  
ml@williamsburgent.com

**KHALED SALEM**  
713.804.1020  
ks@williamsburgent.com

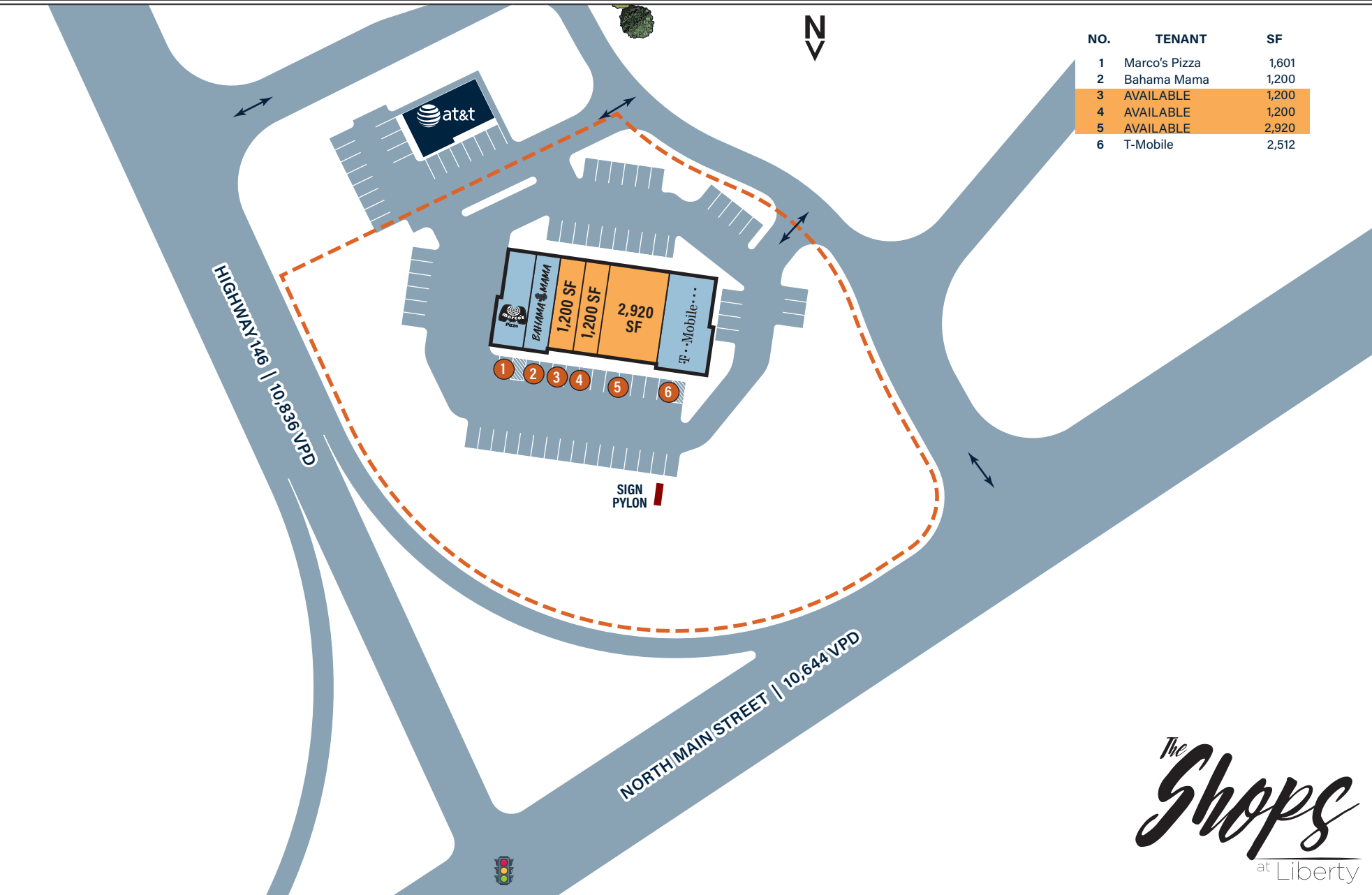








# SITE PLAN





SHOPS AT LIBERTY | LIBERTY, TEXAS



*The Shops*  
at Liberty



SHOPS AT LIBERTY | LIBERTY, TEXAS





# DEMOGRAPHICS



## POPULATION

2010 Population	8,397
2022 Population	9,447
2027 Population Projection	9,919
Median Age	37.1

## INCOME

Average HH Income	\$83,939
Median HH Income	\$60,962
Per Capita	\$30,936

## RACE & ETHNICITY

White	61.13%
Black/African American	15.02%
American Indian/Alaskan	0.31%
Asian	0.59%
Native Hawaiian/Islander	0.06%
Other Races	19.44%
Two or More Races	3.44%
Hispanic	33.62%

## HOUSEHOLDS

2027 Projection	3,487
2022 Estimate	3,307
2010 Census	2,902
2000 Census	2,915
Growth 2022 - 2027	5.44%
Growth 2010 - 2022	13.96%
Growth 2000 - 2010	0.44%





## Our Story

Founded in 2009, our portfolio consists of over two million square feet of Retail, Multifamily, and Industrial properties.

## Our Firm

We are a fully integrated Real Estate Investment Firm that specializes in the acquisition, development, leasing, and management of a rapidly growing commercial real estate portfolio.

## Our Mission

We seek to add value to the properties we manage and the communities they serve. We are a for-profit enterprise, but proudly manage a large annual philanthropic budget that supports education and community involvement.

*The*  
**Shops**  
at Liberty

## Leasing Contact

---

### MARK LAPEYROUSE II

e | [ml@williamsburgent.com](mailto:ml@williamsburgent.com)

t | 713.804.1011

### KHALED SALEM

e | [ks@williamsburgent.com](mailto:ks@williamsburgent.com)

t | 713.804.1020